

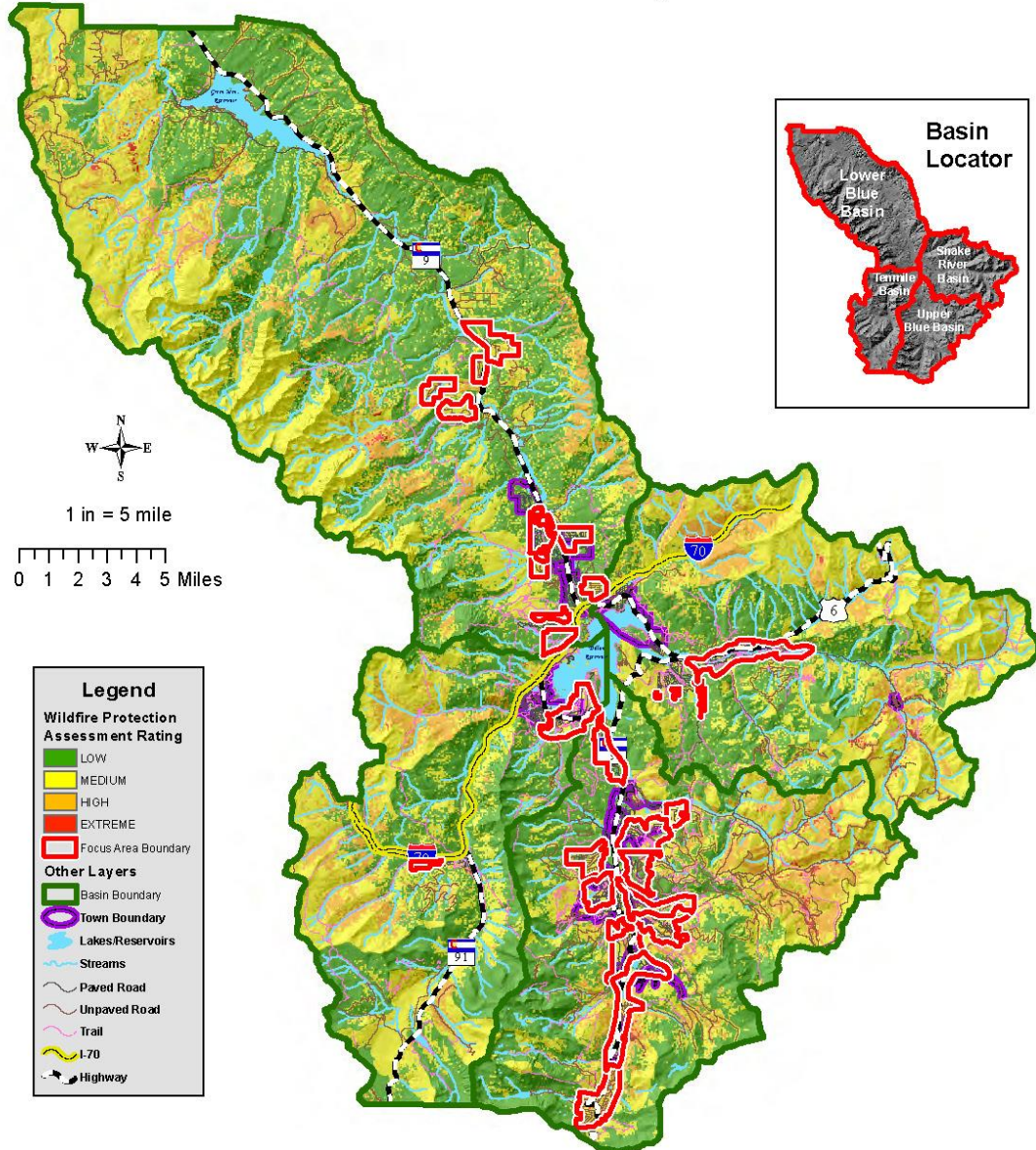
# I. FOCUS AREAS FOR REDUCING WILDFIRE HAZARDS

Using the Community Protection Assessment Map to identify those areas with the greatest need for fire protection, the SCWC established more limited areas where community resources should be focused to reduce potential damage from wildfire. The focus area map shows the 27 “focus areas” identified by the SCWC in 2010. A listing of the focus areas may be found in the table below. The identification and designation of these focus areas relies heavily on the Protection Assessment Map as well as the recommendations of staff and site inspections of each area by members of the SCWC. The interjection of common and practical sense through the recommendations of staff and adjustments made to reflect the values of the community as expressed by the SCWC eliminate some of the modeling imperfections that are apparent in the computer generated Community Protection Assessment Map. Focus areas may also be adjusted if appropriate to include critical community infrastructure such as transmission lines and protection of watersheds that supply municipal and community water systems. Adjustments to focus area boundaries to reflect watershed protection should be based on detailed scientific analysis.

Concurrent with the identification of these focus areas, the SCWC established management recommendations to reduce the risk of wildfire. Management recommendations for reducing the hazard of wildfire are outlined in [Appendix A](#). Mitigation projects are prioritized based on wildfire risk and infrastructure at risk. Fuel types, house density, slope, aspect and fuel types are used to determine appropriate mitigation projects. Focus areas are numbered starting from the north and ending in the south. Appendix A also has focus areas grouped by River Basins:

<u>Number</u>	<u>Focus Area</u>	<u>River Basin</u>
1	Acorn Creek	Lower Blue
2	Sierra Bosque	Lower Blue
3	Boulder Creek Ranch	Lower Blue
4	Pebble Creek Ranch	Lower Blue
5	Eagles Nest	Lower Blue
6	Hamilton Creek	Lower Blue
7	Ruby Ranch	Lower Blue
8	Ptarmigan	Lower Blue
9	Mesa Cortina	Lower Blue
10	Salt Lick Gulch- USFS	Lower Blue
11	Keystone	Snake River
12	Keystone Ranch	Snake River
13	Summit Cove	Snake River
14	Lewis Ranch	Ten Mile
15	Iron Springs/ Hospital	Ten Mile
16	Iron Springs/ Gold Hill	Upper Blue
17	Summit Estates	Upper Blue
18	Golden Horseshoe North	Upper Blue
19	Golden Horseshoe South	Upper Blue
20	Peak 7	Upper Blue
21	Peak 8	Upper Blue
22	French Gulch	Upper Blue
23	Boreas Pass/ Baldy Rd	Upper Blue
24	Warrior’s Mark	Upper Blue
25	Crown/ Bekkedal	Upper Blue
26	Blue River	Upper Blue
27	Quandary Village	Upper Blue

# Summit County, CO Community Wildfire Protection Plan 2016 Community Protection Assessment



This map shows the GIS analysis of Step 5 in the Community Wildfire Protection Plan (CWPP). The CWPP model was developed by the National Association of Counties. The data model for Step 5 was created by ESRI and the Colorado State Forest Service. This model has 5 components that are used to generate the final output: Step 5A Fuel Hazards; Step 5B Risk of Wildfire Occurrence; Step 5C Essential Infrastructures at Risk; Step 5D Community Values at Risk; Step 5E Local Preparedness and Firefighting Capabilities. These steps are merged using a weighted overlay analysis where all five parts are given a percent of influence (See Analysis Model). The output, Wildfire Protection Assessment, is divided into 4 categories, LOW, MEDIUM, HIGH, and EXTREME to show the overall conditions in Summit County, CO. Data for the model was prepared by USFS Dillon Ranger District, and Summit County Government. CWPP model was developed by ESRI and Colorado State Forest Service.